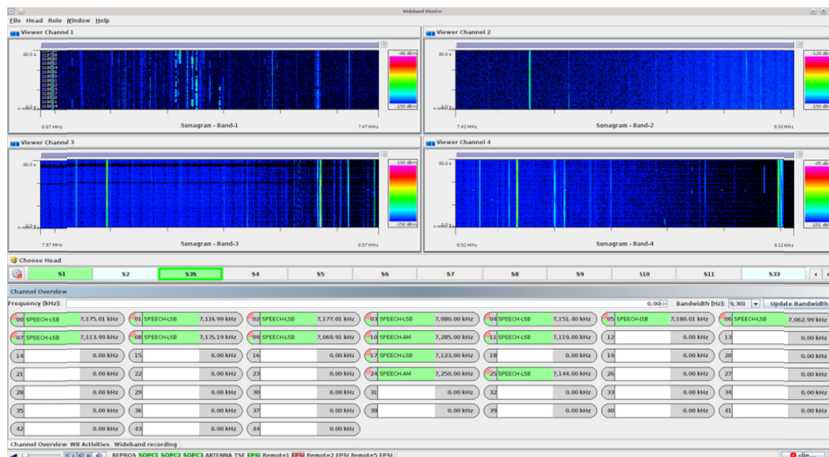


SPEECH ROBOT

DETECTION AND STORING OF SPEECH SIGNALS DIRECTLY FROM THE WIDEBAND

What is Speech Robot?

The Speech Robot is a software module that can detect speech signals in a wideband signal. The detected speech signal can be stored as a ".WAV" file for listening-in and further processing. This module can be used as an option within SMT's ARS-8000 product.



What can it be used for?

When analysing wideband scenarios, the detection of speech signals has always been a difficult task, since silences and different speakers (two-channel-communication) lead to errors and multiple short speech files. Additional information like time and frequency can be stored as meta-data of the signal.

What are the benefits when using the Speech Robot?

With this very reliable detection of speech signals, the operators can work directly on the speech files and use them for further processing. The operators can now listen to the complete conversation, including 2-channel-communication. Additionally, silences and pauses can be blocked.

The quality and error rate of detection and identification are better than with other traditional approaches, thus the reliability of the speech robot outperforms other approaches.

The resulting speech signals can be used for SMT's speech classification algorithms, identifying language and speakers of the signals upon request.

Please note that the speech robot is available only by software update – some additional hardware might be recommended for processing.

Please do not hesitate to contact us in case you have any questions or would like to receive a customised proposal.